

106P

ADVANCED PROJECT MANAGEMENT

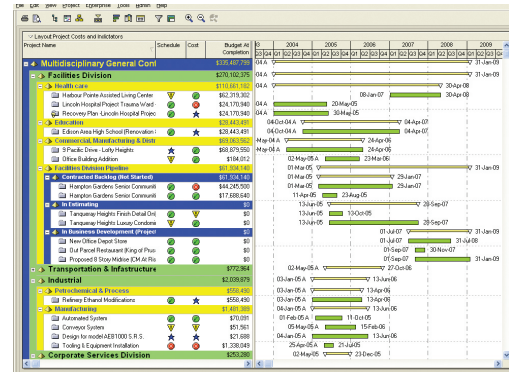
in Primavera P6

PMI-REP Certified Program 1492-106-P (13 PDU's)

2 days

This two-day course provides in-depth project management training in Primavera's client/server-based solution. Developing the skills learned in Basic Course 102, the Advance106P course covers advanced subjects such as earned value analysis, updating baselines, and top-down budgeting. Hands-on workshops enable students to apply skills learned throughout the course. Learning objectives are:

- Modify projects using advanced functionality
- Analyze projects using earned value
- Effectively manage risks and issues
- View Primavera data in other applications



Course Outline

Creating a Project with Project Architect

Project Management Process.
Tailoring the Project.

User-Defined Fields and Global Change

Creating a New Global Change and a Global Change with If..Then..Else Logic.

Advanced Scheduling

Multiple Float Paths.
Calendar Effect on Lag.

Importing and Exporting Data

Export and Import Wizard.
Adding New Schedule Data via Excel.

Updating Baselines

Updating a Project and Update Baseline Options.

Activity Usage Profile and Spreadsheet

Displaying Cost Data, Bars and Curves, Usage for Selected Activities, and Usage for a Specific Time Period.

Earned Value Analysis

Calculating Planned Value, Actual and Earned Value Cost.
Cost, Schedule Performance Indices.

Assigning Codes

Assigning Project, Resource, Global Activity, Project Level Activity and ESP-Level Activity Code Values to Projects.

Duration Types

Modifying Activity with Fixed Units/Time Duration Type.

Top-down Budgeting

Establishing Budgets and Spending Plan.
Tracking and Analyzing Budgets.

Risk Documentation

Calculating Exposure Values and a Risk's Impact.

Auto Compete Actuals

Tracking Layouts

Calculating Percent Complete

Updating Activities Based on Physical, Duration, and Units Percent Complete.

Transferring data between Primavera and Microsoft Excel

Modifying Project Data in Excel and Importing Data from Excel into Primavera.

Monitor Thresholds and Issues

Creating Threshold, Adjusting the Project and Closing Issues.

Top-down Estimating

Calculating, Performing and Applying Top-down Estimation.

Portfolios

Using Portfolios to Open Projects.

Claim Digger

Configuring Projects, Output Options.

Who Should Attend

This course targets Project Managers, Project Control Managers, Project Control Engineers, Planning and Scheduling Engineers, Quantity Surveyors and others who are interested in managing projects successfully or willing to contribute to project success.

In What Industries

Government, Real Estate Development, Aerospace, Defense, Engineering and Construction, Manufacturing and Industrial, Oil and Gas, Petrochemical, Power and Water Utility Plants, Education and Training, Retail, Financial Services, Information Technology, Telecommunication, Automotive, Media Production, E-Business Enablers, Marketing and Sales, Pharmaceuticals, Environmental Management, Hospitality Management, Shipbuilding and Repair Yards.

Important Message to PMP Applicants

CMCS would like to advise all course attendees to submit a PMI Credential Application ONLY After and NOT Before they have successfully completed the course which credits the necessary contact hours required to qualify for PMI Credential Examinations. If it is discovered by PMI upon application audit, that an applicant has not successfully completed the project management course before the date the application was submitted, then the application would be considered null due to misrepresentation, thus rendering the applicant disqualified to sit for any PMI Credential Examination, including existing examinations or examinations PMI may offer in the future. If such a case occurs, neither CMCS nor PMI will hold any responsibility, claim or consequence towards the involved attendee.

Certificate

A certificate of completion will be issued to those who attend and complete the program. This course will entitle delegates to 13 Professional Development Units (PDU) out of the 35 contact hours required to apply for the PMP Certification Exam. After having PMP, those PDUs can be applied against the 60 PDUs that one must earn to maintain his/her title for 3 years after receiving the PMP certification. All of our Primavera trainings are provided by certified Primavera trainers and solution providers who are annually being trained and tested by Primavera Systems, Inc.

COLLEGE OF ENGINEERING
OUTREACH PROGRAM

For more information:
cen-outreach@aus.edu
+971 6 515 2852 (2pm - 5pm)